

# VetView Veterinary Tunnel

## Product Family Advantages

Rated up to 2,500lb. (1,134kg) of direct weight

Slip-resistant tube side protective cover

Positioning slot for lateral and AP

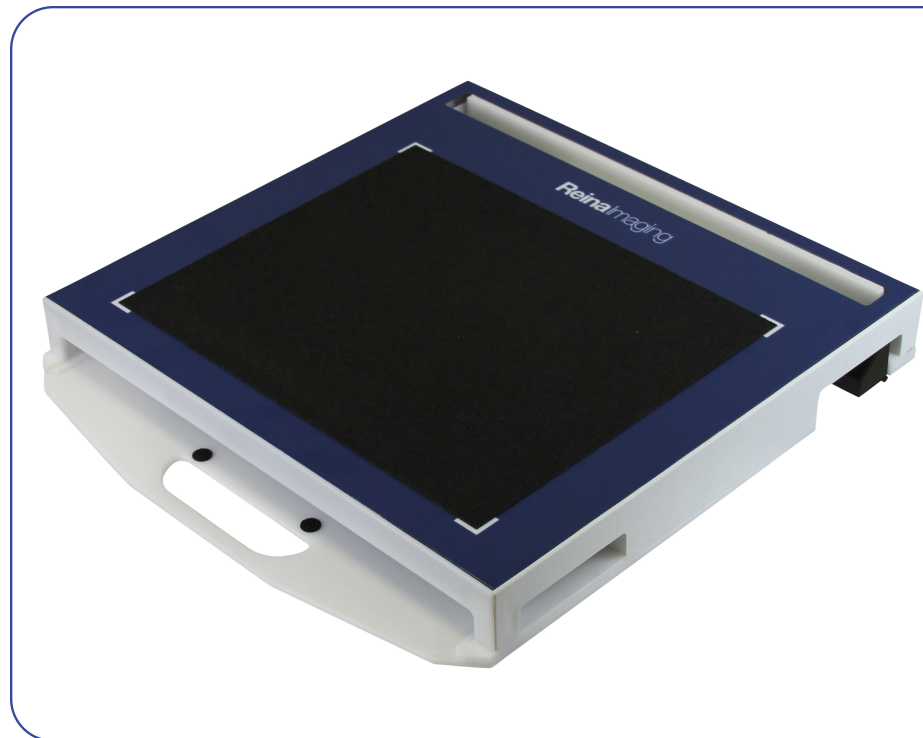
Solid bottom and rubber feet for panel protection

Flip-down legs provide 5 degree angle for comfort during skyline views

Available in 17x17in., 14x17in., 10x12in. and 24x30cm

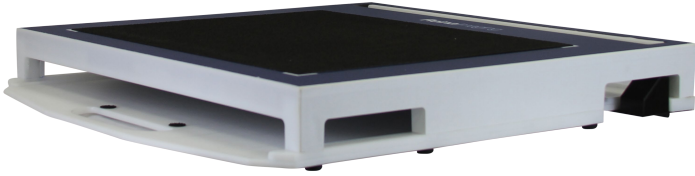
Built-in carrying handle for easy transport

For use with or without a protective case



The **VetView™** veterinary tunnel line of accessories offers superior panel protection and ease of use at an affordable price. Available in a variety of sizes and configurations, the **VetView** tunnel protects the DR panel from damage during weight bearing exams and can be used with our line of panel protectors. The **VetView** Tunnel can be used in typical veterinary practices for medium to large sized animals as well as in zoos and aquatic settings.

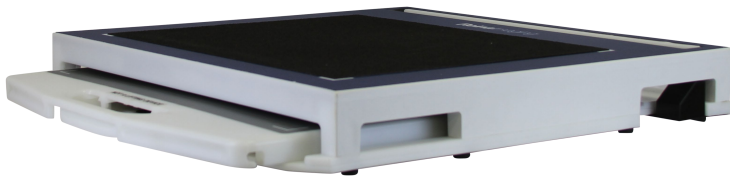
# Product Details



Without a carrying case



Lateral projection



With a carrying case



Rear view



5° angle

Side view

\*Mobile DR Panel Holder not included